

Non-Ferrous Melting Systems

SX-12
SX-13

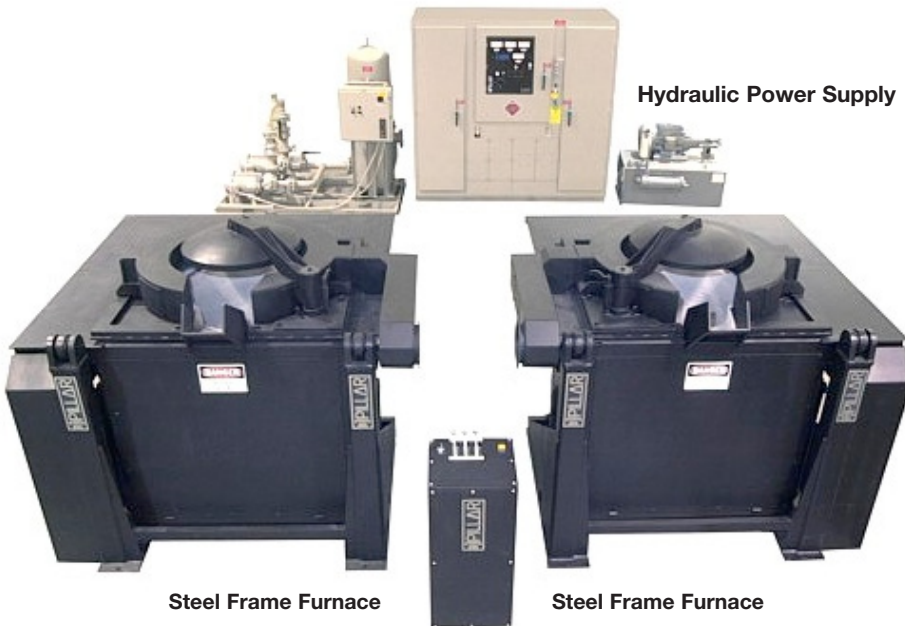
Steel Frame Furnaces (SFF)

Versatility, reliability and flexibility describe the complete system featured here, incorporating the Pillar Induction fully-shunted, steel frame furnaces (SFF). Processing brass and aluminum, these melting systems utilize the industry standard for power supply performance – the Pillar patented MK-8 Power Supply.

MK-8 Power Supply

Water Cooling System

Hydraulic Power Supply



Steel Frame Furnace

Steel Frame Furnace

Melting System Specifications:

Power Supply: Pillar MK-8
Power Range: 225 kW - 450 kW
Furnace Capacity: 2,200 lbs - 3,300 lbs

System Includes:

- MK-8 Power Supply with (2) Furnace Selector Switches
- (2) Steel Frame Furnaces with Hydraulic Tilt Operation
- Hydraulic Power Supply
- Hydraulic Valve Pedestal
- Lead Adaptors
- Water Cooled Power Leads

Options:

- Manually Operated Furnace Lids
- Fume Collection Ring
- Isolation Water Cooling System
- Furnace Weighing Systems Available on 2,000 lb and Larger Furnaces
- Closed Pressurized Water Cooling System (Single and Dual Pump)
- Cooling System available with dry or evaporative cooler
- Melt Monitoring Systems
- Melt-Dek – Prefabricated enclosure and operating platform for the melt system

SX System #	MK-8 Power Supply Rating	Frequency Rating	Furnace / Size	Cooling System Type	Melt Time Brass at 2,150°F*	Melt Time Aluminum at 1,400°F*
12	450 kW	600 Hz	2,200 lb (1,000 Kg) SFF	Water to Water (Power Supply Only) or Single Pump Station with Dry Cooler	39 minutes	—
13	225 kW	1,000 Hz	1,100 lb (500 Kg) AL capacity 2,385 lb (1,084 Kg) brass capacity	Dual Pump Station with Dry Cooler	—	73 minutes

* Based on nominal furnace size for a second heat utilizing a lid or blanket and a rammed lining with a 10% heel, when lining is hot, charge is dense and proper interconnect.

Non-Ferrous Melting Systems

SX-12
SX-13

Steel Frame Furnace (SFF) — MK-8 Power Supply



MK-8 Power Supply

Standard Features:

- High Efficiency design allows use of maximum inlet water temperature of 115° F.
- Full Range Power Adjustment from a single operator control.
- Load Matching Water Cooled Capacitors with pressure sensitive safety switches
- Fused disconnect switch
- Instrumentation
 - Output power (KW) meter
 - Output voltage meter
 - Operating frequency meter
 - Leakage current meter
- Self Diagnostic monitor and indicators
- Operator Controls
 - High frequency power on/off/reset
 - Power control potentiometer
 - Leakage detector test / reset push button
- Compact, Economical, Easy Access Package incorporates a design with convenient front access
- Most Efficient Coupling Method utilized to give the best matching capabilities over a wider range of operating conditions without the need for transformer tap or capacitor switching

Steel Frame Furnace (SFF)



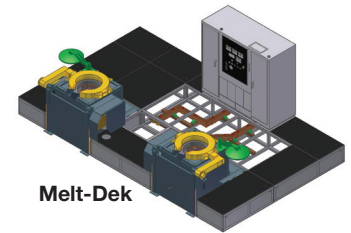
- Fully grounded structural steel frame assembly & steel column type stanchions
- Fully captive electromagnetic flux containment system
- High efficiency induction coil
- Upper & lower refractory cooling coils
- Precast solid refractory bottom
- Sectioned precast top insulation ring
- Leak detector probes
- Hydraulically tilted furnace

Furnace Selector Switches

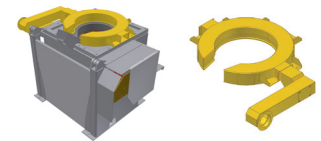
- Safety interlocks
- Front access
- Cast aluminum handle assembly for reliable, long life



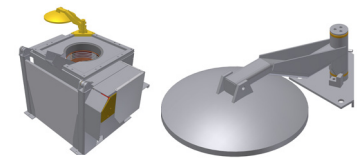
Optional Equipment



Melt-Dek



Fume Collection Ring



Manually Operated Furnace Lids



Hydraulic Power Supply

- Pump, motor, manual motor starter, start/stop buttons, reservoir & filter
- Use of a water/glycol based fluid or suitable synthetic fluid required

Closed Pressure Water Cooling System – Single Pump (Dual also available)

- Pump Station with Dry Cooler
- Closed & Pressurized System Cooling
- Air elimination system
- Expansion tank
- Structural steel frame
- Pump with motor
- Internal piping & wiring included
- Electrical & temperature control panel with alarm circuit
- Dry Cooler (liquid to air) complete with fans, coils and enclosure for outdoor mounting
- Automatic pump switchover to standby pump (Dual Pump Station Only)



Ancillary Equipment



Isolation Water Cooling System (ICER)

- Water to Water heat exchanger
- Closed & Pressurized Power Supply Cooling
- Air elimination system
- Expansion tank
- Structural steel frame
- Pump with motor
- Requires customer supplied water source



Dry Cooler

USA Headquarters

21905 Gateway Road
Brookfield, WI 53045
Phone: +1 262-317-5300
Fax: 262-317-5353

CHINA

No. 533 Yuan Zhong Road
Nanhui Industrial Zone
Shanghai, China 201399
(86) 21-68009546
(86) 21-68009542 (FAX)

ENGLAND

2 Dorset Road,
Sattley Business Park
Sattley, Birmingham B8 1 BG
(44) 121 322 8000
(44) 121 322 8080 (FAX)

GERMANY

Ersheimer Str. 87
69434 Hirschhorn, Germany
49 62 72 92 17 500
49 62 72 92 17 587 (FAX)

JAPAN

1-6-35 Shinsuna
N-Building, 7th Floor
Koto-Ku, Tokyo, 136-0075 Japan
(81) 33647 7661
(81) 33647 7662 (FAX)

KOREA, Seoul

Room #201, Dae-Ryuk Bldg, 103-9
Guro-Dong, Guro-Ku, Seoul Korea
(82) 2 837 2290
(82) 2 837 2292 (FAX)

MEXICO

Avenue Manantiales No. 11
Esq. Acueducto
Parque Industrial Bernardo Quintana
El Marquez, Queretaro
C P 76246 Mexico
(011) 52 442 221 5415
(011) 52 442 221 5090 (FAX)

Induction OEM for



www.pillar.com

